



Introduction

"Refined Colors" uses a newly developed LED (light-emitting diode) lamp capable of projecting some 16.7 million color variations from only RGB (red-green-blue) diodes.

Thinking to make optimal use of this low-energy, lightweight LED device, with all sound and lighting operations controlled by notebook PC, we pulled together a highly mobile tour team, and launched our traveling production from a residency at the YCAM* / Japan 2004 July (world premiere), continuing on to any city in the world.

At each of the locations, we will take sound and scenery image samples by means of PC and other portable digital technology so as to incorporate local elements into each staging and create a series of works all linked to the common theme of "travel."

*YCAM=the Yamaguchi Center for Arts and Media

Performance duration 60 minutes

2004 Asia tour :

15th and 16th July
Refined Colors performance@YCAM StudioB
17th, 18th and 19th July
Cheer Colors WORKSHOP@YCAM StudioB
Yamaguchi, JAPAN

31st July and 1st August
Refined Colors performance@Patravadi Theatre
Bangkok, THAILAND

12th and 13th August
Refined Colors performance@Esplanade TheatreStudio
14th and 15th August
Cheer Colors WORKSHOP@Esplanade RecitalStudio
SINGAPORE

21st and 22nd August
Refined Colors performance@MCPA Theatre
Kuala Lumpur, MALAYSIA

2005 :

01st and 02nd April
Refined Colors performance@EXIT Festival
Maison Des Arts Creteil, Paris, FRANCE

20th, 21st and 22nd September
Cheer Colors WORKSHOP@Kyoto Performing Arts Center Studio21
23rd and 24th September
Refined Colors performance@Kyoto Performing Arts Center Studio21
Kyoto, JAPAN

2006 Spain tour :

03rd and 04th February
Refined Colors performance@Teatro Central
Sevilla, SPAIN

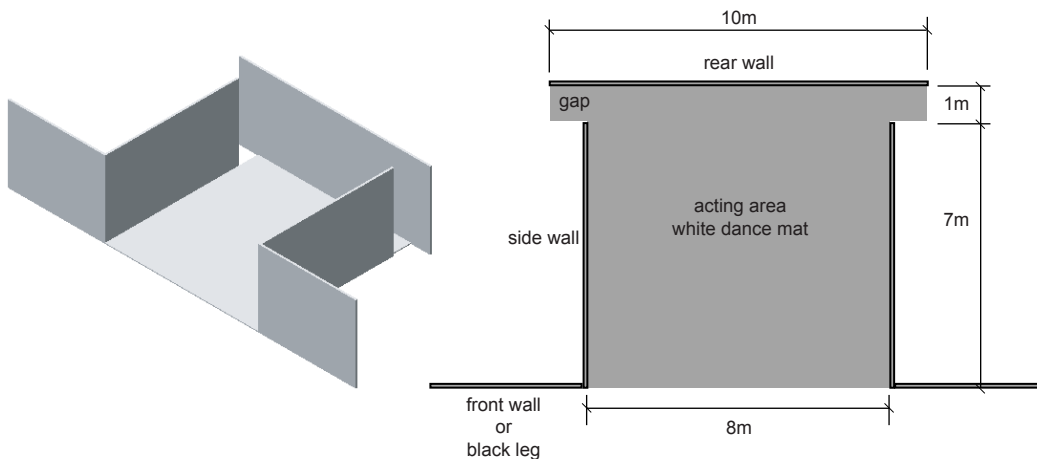
08th and 09th February
Refined Colors performance@Teatro Alhambra
Granada, SPAIN

11th and 12th February
Refined Colors performance@Teatro Canovas
Malaga, SPAIN





Technical Requirement #1
Stage / Auditorium
Operation place



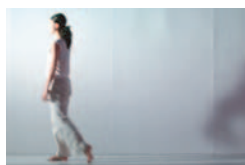
STAGE WIDTH : over 10m
 STAGE DEPTH : over 9m
 ACTING AREA : 8m x 8m
 STAGE FLOOR : White dance mat
 must cover all the acting area and both side gaps between back wall and side walls.

WALLS :
 The back and both sides of the acting area must be set up with white wooden panels as in the above plan.
 The stage front is set up with the same white wooden panel or with black legs.
 The height of the white wooden panels is over 3m.
 If you want to use a cyclorama instead of the back wall this must be confirmed in prior discussion with us.

AUDITORIUM SEATS :
 Regular theater seats, higher in the back.
 All seats must have a good view of the stage floor surface.

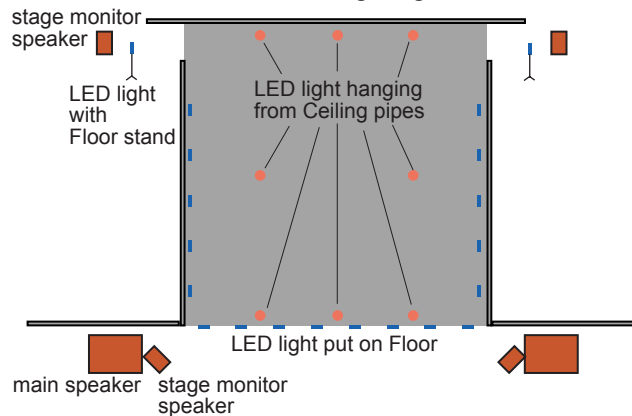
REHEARSAL ROOM :
 We need a dance studio (wooden floor or dance mat, mirrors, etc.) for rehearsals on setup day.
 Please provide a CD player in the rehearsal room.

OPERATION TABLES :
 The nature of this performance (sounds are controlled live and all technical elements -- sounds and lighting--are synchronized) requires sounds and lighting to be controlled and operated from the operation table installed in the center of the end row of the audience.
 The table should have a minimum surface space of 400 cm long x 70 cm wide, or a platform which can hold all the control devices.
 It is absolutely IMPOSSIBLE to do operations from the existing lighting/sounds operation rooms in your theater (if any). Please arrange the audience seating accordingly.





Technical Requirement #2 Sound, Lighting



SOUND

SPEAKER :

We prefer the following sound system.

Main System :

(L) d&b-audiotechnik E9 + d&b-audiotechnik E18(sub woofer)

(R) d&b-audiotechnik E9 + d&b-audiotechnik E18(sub woofer)

Stage monitor : d&b-audiotechnik E9 x 4

If the venue has the same power/quality as the above system this is then subject to negotiation.

Hi-box speaker : x 4 (Lx2,Rx2)

Powered Sub Woofer : x 2 (Lx1,Rx1)

Stage monitor : x 4

Sound console : over 12ch

Outboard units :

Sampling Reverb, Graphic EQ, Parametric EQ, Limiter/Compressor

Intercom :

Setup at operation table x1 and the left side stage x1.

LIGHTING

LIGHTING PROJECTORS :

We use only the LED lighting projectors which we bring.

The venue lighting system is used at the auditorium before and after the performance.

We hang 8 LED projectors from the stage ceiling.

DMX CABLE LINE :

We need one DMX line from the operation table to the right side of the stage behind the front wall.

FLOOR STAND :

2 floor lighting stands at both sides of the stage. Minimum height is over 150cm.

POWER SUPPLY and PLUG ADAPTER

The LED lighting projectors working on 100v-120v and also 200v-240v need a total of 100v 25A or 200v 18A power for all the LED lights.

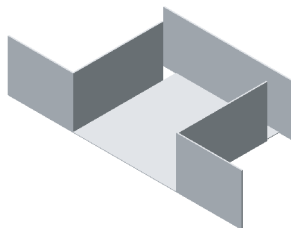
We need 5 power out puts at the both sides of the stage floor and 4 from the ceiling.

Also prepare 9 plug adapters from USA type in accordance with the venue type.





Technical Requirement #3
Option:Workshop"Cheer Colors"



"Cheer Colors" workshop will make free use of lighting colors by using LED lighting system. The participants - dancers - can easily recognize the colors on the stage created for "Refined Colors" as it is enclosed by white walls on three sides. The participants can create movements in the colors and sounds that they choose.

Entry number :

Maximum 16 people for one workshop.
The participants will be divided into 3 or 4 teams then each team will create a short dance piece.

Time schedule :

2 day period -
One workshop. 6 hours each day, total 12 hours.
3 day period -
Possible to have two workshops in one day.
4 hours each day, total 12 hours for each workshop.
The participants must be full time / 12 hours.

Place order :

Use the same stage as the "Refined Colors" performance.
Also keep movement space for each team at side stage area or in the auditorium where seats have been removed.

Equipment requirement :

Window PC (OS = 98, 2000 or XP) x 3 or 4
The number of PC depends on the number of participants.
Both desktop and notebook PC are possible.

Portable CD player x 3 or 4

They are used for each team's movement performance.

Headphone set or earphones x the number of participants for lighting design in PC.

Full set of sound PA and lighting system are used for this workshop too.

Tables for WindowsPC are installed in the auditorium.





Schedule & Tour Members

Set up and performance period :
One day set up and rehearsal + 2 more days for 2 performances.
With "Cheer Colors" workshop (optional) add 3 more days.

Refined Colors Creation and Tour members

Total 7 persons (see following list). 3 dancers + 3 technical + 1 manager

- | | | |
|---------------------------------------|---|--|
| Takayuki FUJIMOTO (dumb type) | : | Director & Lighting |
| Kosei SAKAMOTO (Monochrome Circus) | : | Choreographer, Dance Director & Dancer |
| Hirokazu MORIKAWA (Monochrome Circus) | : | Choreographer & Dancer |
| Yuka SAEKI (Monochrome Circus) | : | Choreographer & Dancer |
| Takuya MINAMI (softpad) | : | Sound & Visual design |
| Daito MANABE | : | Sound & Programming |
| Yuko MORI (Monochrome Circus) | : | Choreographer & Company manager |

Contact :
kinsei@dumbtype.com

Monochrome Circus
http://www1.newweb.ne.jp/wb/hot-summer/mc/mc_e_index.html

dumb type
<http://dumbtype.com>

